

ABOUT THE SCHEME

- AN OPEN ENDED EQUITY GROWTH SCHEME
- FOCUSES ON MULTINATIONAL COMPANIES WITH GOOD GOVERNANCE, STRONG BRAND, MARKET LEADERSHIP & STRONG PARENTAGE HAVING A PRESENCE IN INDIA

PORTFOLIO STRATEGY

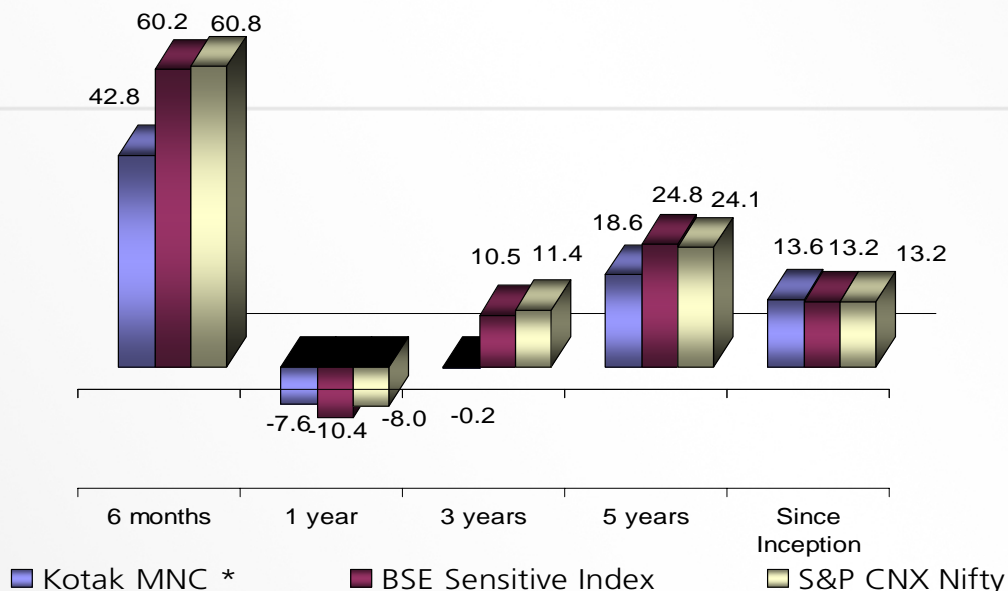
- BOTTOM UP STOCK PICKING
- AGGRESSIVE ALLOCATION ACROSS SELECT STOCKS
- DIVERSIFIED ACROSS SECTORS
- MAXIMUM OF 70%\$ IN MID CAP STOCKS

| Company | % To NAV* |
|--------------------------|-----------|
| Mphasis Ltd | 6.01% |
| Hindustan Unilever | 5.34% |
| ITC | 4.88% |
| Bharti Airtel | 4.67% |
| Nestle India | 4.58% |
| Cairn India | 4.40% |
| Maruti Udyog | 4.36% |
| Siemens | 3.72% |
| Alstom Projects India | 3.55% |
| GlaxoSmithkline Consumer | 3.27% |
| As on 29th May 2009 | |

SUITABLE FOR INVESTORS

- WHO WANT TO DIVERSIFY THEIR PORTFOLIO BY TAKING EXPOSURE TO MULTI NATIONAL COMPANIES AND HAVE AN APPETITE FOR RISKS INVOLVED

Performance as on 29th May 2009#



Kotak MNC NAV as on 29th May 2009# is Rs. 25.048* Returns <= 1 year: Absolute. Returns > 1 year: CAGR (Compounded Annualized Growth Rate). Past Performance may or may not be sustained in future. # 30th May 2009 and 31st May 2009 being non working days.

SIP Returns

| SIP Returns | 1yr | 3 yr | 5 yr |
|------------------|-----------|--------------|--------------|
| Investment Amt | Rs.60,000 | Rs. 1,80,000 | Rs. 3,00,000 |
| Investment Value | Rs.72,507 | Rs.1,82,191 | Rs.3,61,890 |
| XIRR | 41.51% | 0.79% | 7.46% |

The data does not consider the loads. The data assumes the investment on 1st day of every month or the subsequent business day. XIRR is the internal rate of return of the cash flows. SIP returns calculated on 31st May 2009.. Past performance may or may not be sustained in future.

FACT FILE

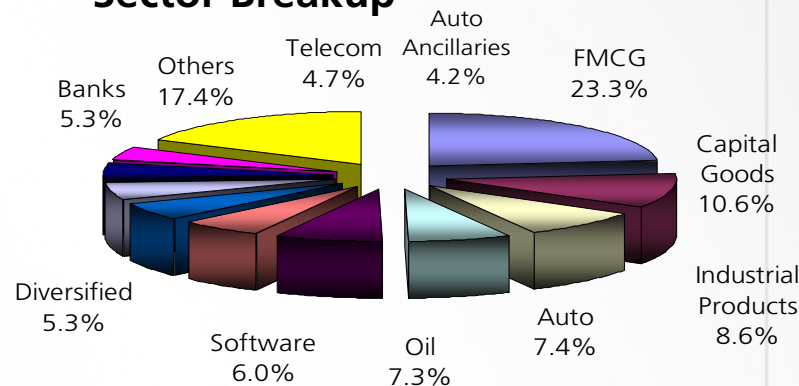
| | |
|----------------|---------------------------|
| Allotment Date | 4th April 2000 |
| Benchmark | S&P CNX Nifty, BSE Sensex |
| AUM | Rs.26.37 cr |
| Portfolio Beta | 0.71 |
| Min. Invst | Rs 5,000 |

Source: Value Research

Dividend Declared

| Record Date | Dividend Per Unit (Rs) |
|-------------|------------------------|
| 11-Feb-2005 | 4.50 |

Sector Breakup



As on 31st May 2009